



~ **CLEARANCE LISTING** ~

A507-282-B02 SUN Hydraulic Circuit Manifold Assembly

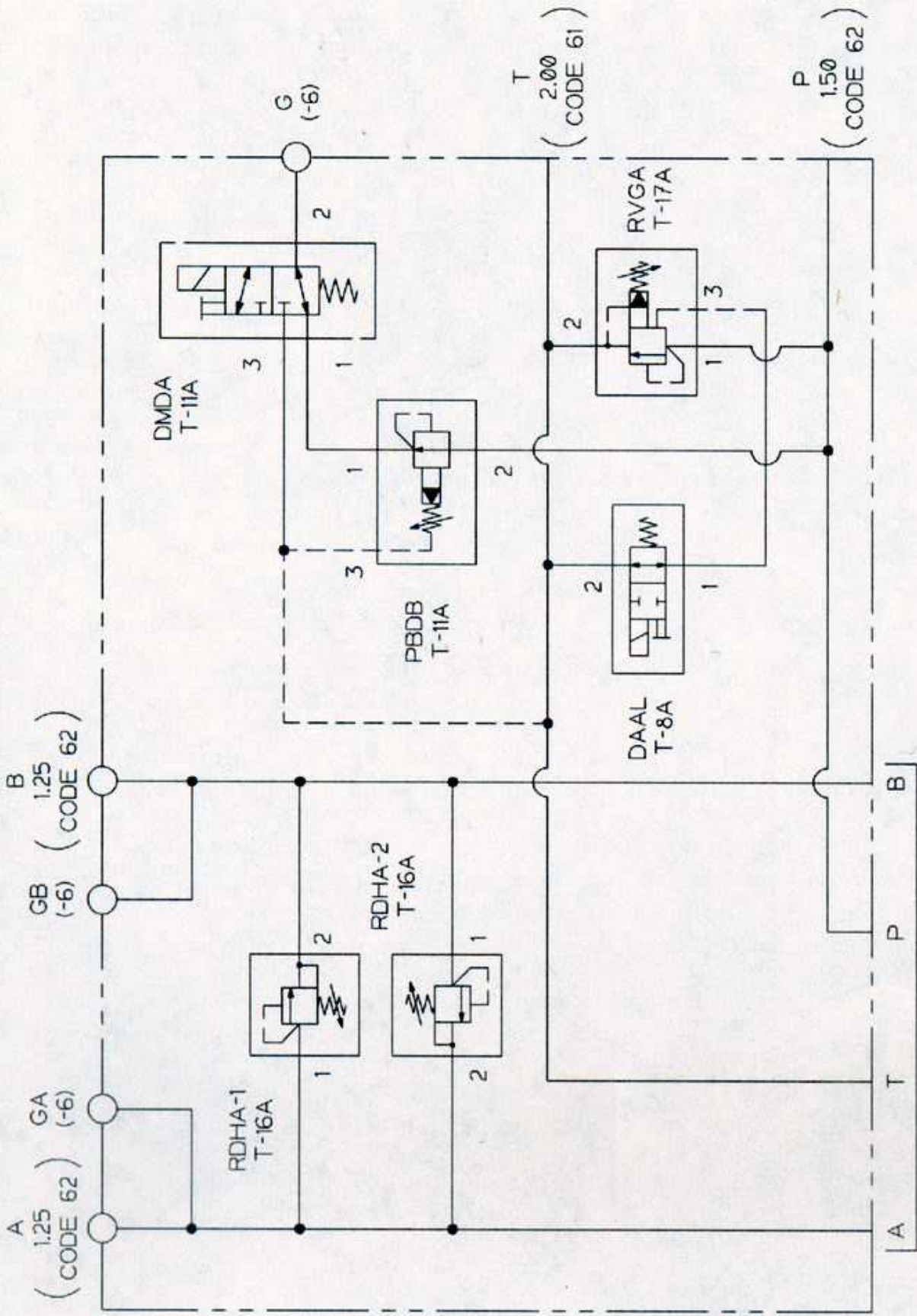
- 100 gpm - 5000 psi rated
- Ductile Iron construction
- Crossport reliefs
- Main pump safety relief
- Proportional Motor Drive circuit to control torque/speed
- Off line Winch Drive for mining or loading dock applications.
- Cylinder circuit for position and force control, or a dumb circuit with no feedback.
- Pump unloading circuit for soft start up.
- Flange ports are code-62
- Tapped mounting holes

New Hydrostatic Drive manifold constructed by SUN Hydraulics. The directional valve interface (DO7) is for a 4WRLE16V-200M-3X/G24K0A1M (0811404251) or similar with same interface. All cartridge valves are included and are brand new. Schematic on page 2. Can be applied to hydraulic cylinder or fluid motor circuits. Has been coated with a primer rust inhibitor...\$1709.00 FOB Walnut, CA.

Contact: Mike Rogers or Eric Johnson - P: (909) 869-7600 – F: (909) 869-7706
Email: ejohnson@hydraulic-controls.com



SCHEMATIC



A507 282 B02

(DO7)